

ANNUAL REPORT

2023-24



THIS IS **YOUR** PLAYHOUSE

OUR MISSION

We are Cincinnati's national theatre – committed to bringing diverse, engaging works of great artistry to our community and to putting Cincinnati's artistic excellence in the national spotlight.

OUR VALUES

Inclusion On Stage and Off – We tell everyone's stories on stage and value everyone's contribution to the process of making them.

Be Curious – Dream, try, fail, try again, learn, grow.

Keep the "Play" in Playhouse – A joyful sense of adventure creates the best experience for all.

Collaboration is Key – Our art relies on everyone's participation.

Excellence Matters – We seek the best in ourselves, assume the best in others and strive for excellence in our work together.

HOW WE DO IT

We produce theatrical works of exceptional artistry.

We provide a home for national and local artists and area arts groups.

We facilitate lifelong theatrical discovery and learning.

We respect and uplift each other – our staff, artists and audience.



LETTER FROM OUR BOARD PRESIDENT



As we close our 2023-24 season, we want to thank you for being part of the Playhouse family. Looking back, we have so much to be proud of, and we are grateful for the collective efforts of our board, donors, artists and audience members who made our first full year in the new theatre complex a resounding success, both artistically and financially.

At the Playhouse, we pride ourselves on thought-provoking storytelling and creating shared experiences. We do that on and off stage through every experience we produce.

This year, we presented 311 performances on our mainstages, reaching 95,705 audience members. Through our education and outreach programs, we educated and inspired over 34,000 children and their families. We served our community through the Arts and Culture Incubator, welcoming five community partners and two resident artists who created 15 events in our spaces. We engaged our audiences in community nights, welcoming people of all races, backgrounds, religious beliefs, abilities and sexual orientations. We hosted 30 post-show ArtTalks, connecting our audiences to actors, playwrights, community leaders and each other to forge deeper connections to the work on stage.

Your Playhouse is a community of shared experiences, and you are a vital part of it. Your participation as a board member, donor, volunteer, partner, vendor, artist and creator is a testament to your belief in the power of storytelling and its ability to shape our lives. Thank you for another outstanding season.

A handwritten signature in blue ink that reads "Digi Schueler".

Digi Schueler
Board President

LETTER FROM OUR OSBORN FAMILY PRODUCING ARTISTIC DIRECTOR



2023-24 marked our first full season in the new Playhouse facility. And what a season it was!

From the classic songs of Johnny Cash to our refreshed production of *A Christmas Carol* to *The Chosen* and *Vietgone* — these productions and others highlighted the Playhouse's ongoing commitment to its mission:

We are Cincinnati's national theatre — committed to bringing diverse, engaging works of great artistry to our community and to putting Cincinnati's artistic excellence in the national spotlight.

This annual report documents not just our onstage programming but also our many educational and community engagement initiatives. I hope you discover something new and unexpected as you read it.

In these challenging times, with many arts organizations struggling to attract audiences and balance their budgets, I remain grateful to the Cincinnati community for making us an "outlier." Audiences are back. Donors are supporting our work. The future looks bright, and we look forward to sharing it with you!

Best wishes to all,

A handwritten signature in black ink, appearing to read "Blake Robison".

Blake Robison
Osborn Family Producing Artistic Director

CONTINUED IMPACT — WHERE COMMUNITY MEETS CREATIVITY

Cincinnati is an artistically vibrant place to call home, thanks to the millions of dollars raised and distributed annually by ArtsWave. As a proud partner, the Playhouse is guided by their Blueprint for Collective Action — a strategic plan designed to keep our region rich in creativity by highlighting the following focus areas:

ARTS DEEPEN ROOTS

9 professional productions on **2** stages entertained **95,705** audience members across **311** performances.

2,500 audience members attended **30** post-show Art Talks.

Post-show discussions were held after all **24** performances of *The Chosen*.

15 Arts & Culture Incubator events were held.

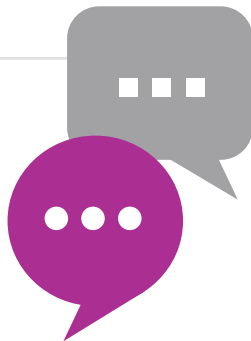


ARTS BRIDGE CULTURAL DIVIDES

4 mainstage shows featured the stories and experiences of BIPOC characters.

5 of this season's productions were written by women, and **4** by BIPOC playwrights.

4 of this season's directors were women, and **4** were BIPOC.



ARTS FUEL CREATIVITY AND LEARNING

2 outreach tour productions reached **12,951** students.

23 school districts across **15** counties experienced Playhouse classroom workshops.

1,448 students at **3** Title I schools were immersed in yearlong theatre residencies.



arts
wave
Funding Arts. Fueling Community.

ARTS ENLIVEN NEIGHBORHOODS

24 Off the Hill performances took place at **18** different community partner spaces, reaching **2,656** people.

50 zip codes in the Greater Cincinnati area gained valuable arts experiences.

304 tickets were distributed to 12 local community organizations through the STAR program.



ARTS PUT CINCINNATI ON THE MAP

2 world premiere adaptations: *Dracula* and *A Christmas Carol*.

The Chosen was co-produced with Milwaukee Repertory Theater.

3 new play commissions in progress.



2023-24 MOE AND JACK'S PLACE — THE ROUSE THEATRE SEASON



THE MARKLEY FAMILY presents
**RING OF FIRE:
THE MUSIC OF
JOHNNY CASH**
Created by RICHARD MALTBY, JR.
Conceived by WILLIAM MEADE

AUG. 26 – OCT. 1, 2023

Sponsored by **U.S. BANK**



MOE & JACK ROUSE and
RANDOLPH WADSWORTH present
CLYDE'S
By LYNN NOTTAGE

OCT. 14 – NOV. 5, 2023



FIRST FINANCIAL BANK presents
**A CHRISTMAS
CAROL**

By CHARLES DICKENS
Adapted by BLAKE ROBISON

NOV. 24 – DEC. 30, 2023



LEADING LADIES presents
DRACULA
A WORLD PREMIERE
By VANESSA SEVERO
in collaboration with JOANIE SCHULTZ

FEB. 3 – MARCH 3, 2024



LINDA & GARY GREENBERG and
ANDREA & DR. EDWARD HERZIG present
THE CHOSEN

By AARON POSNER
and CHAIM POTOK

APRIL 13 – MAY 12, 2024

Sponsored by
**THE JEWISH FOUNDATION
OF CINCINNATI**

2023-24 ROSENTHAL SHELTERHOUSE THEATRE SEASON



SANCTUARY CITY

By MARTYNA MAJOK

SEPT. 16 – OCT. 22, 2023

Sponsored by
DIGI AND MIKE SCHUELER



**LATE NITE
CATECHISM**

By VICKI QUADE
and MARIPAT DONOVAN

NOV. 4 – DEC. 23, 2023



JOHNSON INVESTMENT COUNSEL and
CLARK SCHAEFER HACKETT present
STEW

By ZORA HOWARD

MARCH 2 – APRIL 7, 2024



ELLEN AND RAY van der HORST present
VIETGONE

By QUI NGUYEN

APRIL 27 – JUNE 2, 2024

Sponsored by **ROTO-ROOTER**

The 2023-24 season is presented by
SCHUELER GROUP and **THE VONTZ FAMILY**

Moe and Jack's Place — The Rouse Theatre
Season Design Sponsor: **KERRY AUTOMOTIVE**

David Rowen, Alex Canty and Matt Cusack in *Ring of Fire: The Music of Johnny Cash*; Maiesha McQueen, Shannon Dorsey and Michael Cornelius Chenevert Jr. in *Clyde's*; Taha Mandviwala, Andrew May and Ryan Wesley Gilreath in *A Christmas Carol*; Adam Poss in *Dracula*; Hillel Rosenshine and Ron Orbach in *The Chosen*; Jordan Anthony Arredondo and Amira Danan in *Sanctuary City*; Beth Ward in *Late Nite Catechism*; Michele Shay in *Stew*; and Olivia Oguma and Hyunmin Rhee in *Vietgone*. Photos by Mikki Schaffner

CELEBRATING DIVERSE CREATORS, NEW WORKS AND ARTISTIC VERSATILITY

For our full first season in the new theatre complex, we celebrated the diversity of our region and premiered plays that showcased the capabilities of Moe and Jack's Place – The Rouse Theatre. We created thought-provoking work on stage that sparked great conversations with our audiences. We produced new works that explore contemporary issues, foster theatrical innovation and enrich the canon of American theatre. And we partnered with other regional theatres to share our work nationally.

HERE ARE A FEW HIGHLIGHTS:

Moe & Jack Rouse and Randolph Wadsworth present

CLYDE'S



Left: Maiesha McQueen, Shannon Dorsey, Michael Cornelius Chenevert Jr., Austin Kirk and Juan Arturo in *Clyde's*. Right: Austin Kirk, Maiesha McQueen and Michael Cornelius Chenevert Jr. in *Clyde's*.

One of our goals is to bring nationally recognized new work to Cincinnati, and *Clyde's*, written by two-time Pulitzer Prize-winner Lynn Nottage, fit that bill perfectly. Building community and finding redemption and purpose through the art of sandwich-making was the perfect story for Nottage's vividly drawn characters, as they attempt to reclaim their lives in a world that's set up for them to fail. Staged by acclaimed Director Timothy Douglas, this show brought heart to sandwich-making and made us all better people in the process.

First Financial Bank presents

A CHRISTMAS CAROL

This year marked the creation of our brand-new production of the beloved holiday story, *A Christmas Carol*, specially designed for Moe and Jack's Place – The Rouse Theatre. This fresh adaptation of a classic tale sold out quickly and played to 99.5% capacity, bringing the magic of the holiday season to 21,897 eager theatergoers.

"A showcase of local talent, a demonstration of the possibilities of the Playhouse's new mainstage, and a welcome addition that's likely to become part of Cincinnati's holiday tradition for years to come. No humbug – just joy to the world!" – *Talkin' Broadway*



Andrew May and Jefferson A. Russell in *A Christmas Carol*.

Leading Ladies presents **DRACULA: A WORLD PREMIERE**



Left: Mi Kang and Adam Poss in *Dracula*. Right: The cast of *Dracula*

The world premiere of *Dracula*, co-created by Vanessa Severo and the Playhouse's Associate Artistic Director Joanie Schultz, was a great success and played to 95% capacity audiences. *Dracula* challenged existing beliefs and points of view with a new spin on an age-old tale. Our commitment to new works means Cincinnati audiences were the first to experience this new version of *Dracula* before it goes on to other productions around the nation.

Over the years, we have staged a total of 88 world premieres on the mainstage and commissioned 19 playwrights, nine of whom are women and six of whom are BIPOC artists. This commitment to developing new works allows us to cultivate theatrical innovation and spotlight diverse voices.

Johnson Investment Counsel and
Clark Schaefer Hackett present

STEW

Our commitment to diverse voices continued with Zora Howard's 2021 Pulitzer Prize finalist *Stew*, which ran for 37 performances at 95.8% capacity. Howard is one of American theatre's most lauded new voices, and *Stew* drew an unforgettable portrait of the three generations of Black women at the heart of the play. Contemporary in both form and setting, *Stew* presented the very best of modern dramatic storytelling to our audiences.

An Ode to Black Women was a Playhouse Perspectives event that accompanied our production of *Stew*. This evening of poetry was hosted by Kimberly "DuWaup" Bolden, founder and executive producer of DuWaup's Cincinnati Poetry Slam. It featured 10 local spoken word artists whose work celebrates Black womanhood.

Stew audiences also had the opportunity to join Black influencers, leaders and community members for our first Hues Community Night. This celebration of theatre, excellence and cultural richness recognized Queens Village, an organization dedicated to amplifying Black women's voices, for its service to the community.



(back) Michele Shay, Shayna Small, (front) Maliyah Gramata-Jones and Sydnie Brown in *Stew*.



Michele Shay and Shayna Small in *Stew*.

Linda & Gary Greenberg and
Andrea & Dr. Edward Herzig present

THE CHOSEN

Chaim Potok's classic novel intimately explored complex and thought-provoking questions in a moving adaptation for the stage. A co-production with Milwaukee Repertory Theater, this hugely popular production was a heartfelt exploration of Jewish culture and the human ability to reach out across differences. To strengthen our connections with the Jewish community, special programming accompanied our production of *The Chosen*. Each performance was followed by a discussion of the themes and ideas represented in the play, facilitated by our artistic staff and local experts. These talks provided an opportunity for patrons to dive deeper into the show's subject matter and connect with other audience members about their interpretations.



Eli Mayer and Hillel Rosenshine in *The Chosen*.

We hosted a book club about Chaim Potok's popular novel to discuss the book and how it was adapted for the stage. Following the conversation, participants had the opportunity to take a guided tour of The Nancy & David Wolf Holocaust & Humanity Center. This tour immersed visitors in a learning environment that revealed stories of local Holocaust survivors through carefully curated artifacts, rare documents, interactive survivor testimonies and poignant films.

In collaboration with *ish*, a Cincinnati-based community engagement organization centering on Jewish arts and cultural traditions, we held a panel discussion featuring Jewish teens talking about friendship, self-discovery and navigating the journey of growing up. From history to stereotypes, they explored intersectionality, identity and ways we can all better understand each other.

Ellen and Ray van der Horst present **VIETGONE**



Left: Julian Remulla and Olivia Oguma (background), with Viet Vo and Hyunmin Rhee (foreground) in *Vietgone*. Right: Julian Remulla and Hyunmin Rhee in *Vietgone*.



We closed the 2023-24 season with *Vietgone* by award-winning playwright Qui Nguyen. A romantic comedy set in 1970s Arkansas post-Vietnam War, *Vietgone*'s innovative storytelling featured charming romantic leads, whip-fast comedic delivery and heightened theatricality underscored by original hip-hop songs. Nguyen's heartwarming story, inspired by his parents, made audiences laugh out loud and tear up at the same time.

In celebration of AAPI (Asian American and Pacific Islander) Heritage Month, we hosted an affinity night with Asianati after one of the performances. We welcomed an enthusiastic group of playgoers who enjoyed post-show refreshments and a discussion with Qui Nguyen and the cast of *Vietgone*.

2023-24 EDUCATION PROGRAMMING

We believe that the arts are essential to the basic education of all students. Numerous studies have highlighted the correlation between school arts programs and student achievement, cognitive development and academic outcomes. The goal of our education programs is to provide quality, professional theatre experiences for children across the Tristate, supplementing – and, in many cases, replacing – their vanishing school arts programs. We strive to create programs that are equitable and accessible for all children, regardless of their language barriers, socioeconomic status or abilities.

- **School Outreach Tour and Off the Hill** performances gave students and families the opportunity to experience the magic of live theatre together.
- **Classroom workshops** brought professional teaching artists into schools to supplement curriculum studies and increase arts exposure.
- **Playhouse Education Partnership (PEP)** ensured that students at local Title I schools could engage meaningfully with the arts all year long.
- **Summer camps** supported children's social, creative and academic development in a fun, skills-based environment.



34,771

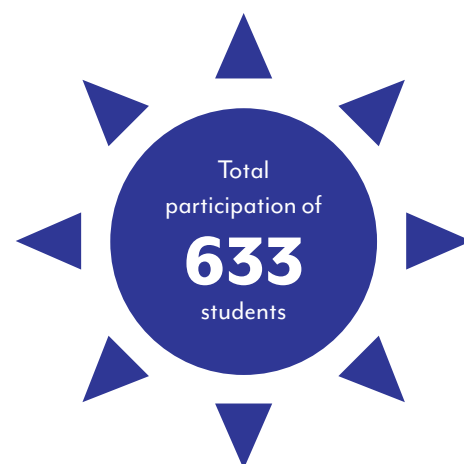
Total number of contacts made with students who participated in our education activities this season.

SUMMER CAMP

We believe theatre can be created by anyone at any age. Guided by our passionate staff, campers work together to make connections with audiences, each other and themselves — learning performance techniques including musical theatre, stage combat, acting, rehearsal and performance. In our inclusive artistic environment, campers explore their individuality, gain confidence, form new friendships and tap into their creativity. This season, children ages 6 to 17 attended camps at the Playhouse, Mason Community Center and Ignite Institute in Erlanger, Kentucky.



2024 Summer Theatre Camp.



We were proud to provide **58** scholarships to students who would have otherwise been unable to participate.

LAUNCH PAD

We continued our commitment to increasing accessibility with Launch Pad — a program designed to fully integrate students with neurodivergences, sensory issues and developmental disabilities into a traditional theatre camp environment. Using their specialized knowledge in both arts education and special education, Launch Pad Coordinators helped train other Summer Camp staff about accommodating students with disabilities and worked closely with families to assess each child's needs and ensure a supportive environment. This year, **112** of our campers participated in the program.

SCHOOL OUTREACH TOUR AND OFF THE HILL

This season, the Playhouse produced theatrical adaptations of *The Velveteen Rabbit* and *The Lion, The Witch and the Wardrobe*. A diverse group of professional actors performed in schools during the week and at community centers throughout the region on weekends.

OUTREACH TOUR

- **65** performances presented for **41** schools.
- The total attendance for the School Outreach Tour season was **13,978**.
- We offered full or partial subsidies to **33** of the **41** schools visited.
- **36** percent of students came from racially/ethnically diverse backgrounds.

OFF THE HILL

- **24** performances were held at **18** community partners throughout the region.
- The total attendance for the Off the Hill Tour season was **2,656**.



THE VELVETEEN RABBIT

Adapted by Trey Tatum
Based on the book by Margery Williams



THE LION, THE WITCH AND THE WARDROBE

Dramatized by Le Clanché du Rand
Based on the book by C.S. Lewis

THANK YOU TO OUR 2023-24 EDUCATION AND OUTREACH SPONSORS

FOR THEIR GENEROUS SUPPORT!

THE ROBERT AND ADELE SCHIFF FAMILY FOUNDATION



ELEANORA C.U. ALMS
TRUST, FIFTH THIRD
BANK, N.A., TRUSTEE

LOUISE TAFT SEMPLE
FOUNDATION



RON BUNT
AND WEI SUN

NELLIE
LEAMAN TAFT
FOUNDATION



CLASSROOM WORKSHOPS

Workshops use drama education techniques to integrate core curriculum topics, such as social studies and literature, with the arts. This season, we infused creativity and fun into the learning process with a total of **555** classroom workshops.

PRAISE FROM TEACHERS

- “I wish we could do this once a quarter! The students LOVE it!”
- “We truly enjoyed our visit from the Playhouse! I don’t have any recommendations to make it better. Our students couldn’t quit talking about it.”
- “Playhouse teaching artists were amazingly patient with the different challenges present in our classroom of various needs and abilities. Adapted seamlessly.”
- “Writing monologues really helped students empathize with the characters, and acting helped them express their creativity.”
- “All the Playhouse school productions are excellent. We love being able to expose our students to theatre.”

PEP

The Playhouse Education Partnership (PEP) is a free yearlong theatre program that immerses students at local Title I public schools in arts activities. We customize unique residencies for each classroom depending on their students’ needs, developing 21st-century skills and teaching key academic subjects in conjunction with statewide curricular goals. This season, PEP schools received access to intensive classroom workshops and both Outreach Tour productions.

PEP Schools: Academy for Multilingual Immersion Studies, Midway Elementary, Silverton Academy

1,448

students participated in programming.

127

workshops took place.

61

total number of days that teaching artists spent with students.



Photos from in-school programs.

ARTS AND CULTURE INCUBATOR

With the opening of our new state-of-the-art theatre facility last season, we created a new program to provide space and resources to local arts and culture groups and resident artists. Members of the Arts and Culture Incubator have access to Playhouse spaces at no cost for classes, rehearsals, creative work, networking, collaboration with their peers, and public and private events. The Playhouse also provides professional development services crafted to meet each of their unique needs. During our 2023-24 Season, we hosted two resident artists and five cultural organizations, who organized 15 events at the Playhouse.

INCUBATOR EVENTS THIS SEASON INCLUDED

- Sold-out performances of Curtis D. Shepard's one-man shows *Unmasked* and *Sidewaze Rain* and recordings of his teacher training videos encouraging BIPOC representation in the classroom.
- A groundbreaking workshop of Queen City Flash's choose-your-own-adventure play *I'm Finally Going to Ask Elizabeth Hopkins to the Homecoming Dance* and *Nothing's Going to Stop Me, Not Even the Ghost of...*, which was later performed at this year's Cincinnati Fringe Festival.
- A roundtable on the challenges facing Cincinnati PRIDE's partner organizations and how to turn those challenges into action items that support the queer community.
- Rehearsals and a concert performance by the Young Professionals Choral Collective of Cincinnati's chamber choir.
- Panels discussing the state of Black art and passion-to-profit workshops on shifting from hobbyists to arts professionals by DuWap's Cincinnati Poetry Slam.
- Live recordings of the Urban Native Collective's podcast *Life on the Margins*, which relates modern Indigenous culture to issues ranging from mental health and diversity in the workplace to environmentalism and political imprisonment.

RESIDENT ARTISTS:



Curtis D. Shepard



Queen City Flash

INCUBATOR PARTNERS:

Cincinnati PRIDE, DuWap's Cincinnati Poetry Slam, Heroes Rise, Urban Native Collective, Young Professionals Choral Collective of Cincinnati



Funding for the Arts and Culture Incubator provided by



The Carol Ann and
Ralph V. Haile, Jr.
FOUNDATION

DIVERSITY, EQUITY, INCLUSION AND ACCESSIBILITY (DEIA) COMMITMENT

The Playhouse's DEIA plan is updated annually and approved by the full Board of Trustees. Our Board and staff composition goals are impactful, and we have made great progress. Next season, our Board of Trustees will be composed of 35 percent historically excluded individuals, and the full-time, non-union staff will be about 20 percent.

Our artistic programming is diverse and inclusive, reflecting our community of creators and audiences. This season and next: 50 percent of plays are by/about diverse communities; over 50 percent of playwrights are women and artists of color.

Color-conscious casting is a priority. What is it? It is the practice of casting diverse artists in any role not specifically designated by the playwright. This approach creates inclusion when audiences can see themselves on stage through a mixed-race Cratchit Family in *A Christmas Carol*, for example.

For more information, visit our website at cincyplay.com/about/DEIA-Commitment

50%

of plays are by/about diverse communities.

>50%

of playwrights are women and artists of color.



The cast of *A Christmas Carol*.



Shannon Dorsey and Juan Arturo in *Clyde's*.

PRIDE COMMITTEE WORK AND LGBTQ+ SPACE

The Playhouse aims to create a space where LGBTQ+ individuals feel safe, validated and accepted. We recognize the power of the arts to foster increased understanding and empathy between members of different groups through the sharing of personal truths. The arts are central to shaping our cultural narrative and fueling social change. Theatre, in particular, is a gathering place where we celebrate our differences and illuminate the human experience. We aim to build a culture in which everyone can participate safely, fully and authentically. Our Pride Event Series is an integral part of this goal.

The Playhouse Pride Committee and Co-Chairs Julia Wesselkamper and Jim Conway hosted two successful Pride events, including a fun Pride Night at one of the *Dracula* performances and a Pride Family Event at one of *The Lion, the Witch and the Wardrobe's* performances at Artsville. Joanie Schultz and *Dracula's* cast attended the first event, which benefited Transform Cincinnati. At the second event, Pride families enjoyed the wonderful performance and some Playhouse swag and candy.



Photos on this page by Mikki Schaffner.

THE LEADING LADIES REACH A MILLION!

This year, the Leading Ladies celebrated their 11th season and reached a running total of over a million dollars raised to support Playhouse productions.

Leading Ladies Co-Chairs Amelia Crutcher and Danute Miskinis welcomed 166 members this season and led four fabulous Leading Ladies events:

- October 2023: A visit to the Playhouse's rehearsal halls to learn how a season is put together from Osborn Family Producing Artistic Director Blake Robison and Associate Artistic Director Joanie Schultz. Hosted by event co-chairs Trish Larsen and Terry Lemmerman.
- November 2023: An introduction to the reimagined *A Christmas Carol*, with all the theatre magic made possible by our wonderful new Moe and Jack's Place – The Rouse Theatre. Hosted by event co-chairs Kelly Dehan and Karen Neyer.
- February 2024: The Big Event: The Leading Ladies' sponsored show, *Dracula*. Hosted by event co-chairs Cynthia Cole and Shelly Sherman.
- April 2024: A conversation with members of the cast of *Vietgone*, facilitated by the show's director, Joanie Schultz. Hosted by event co-chairs Mary Anne Frey and Glenda Suttman.

Together the members contributed more than \$108,000 to support the production of *Dracula*, bringing the total raised over 11 seasons to over \$1,015,000. Well done, Ladies! Brava!



The Leading Ladies gather in the Playhouse's beautiful Schiff Education Studio for the October event.



The Leading Ladies mingle at the November "The Magic of a New Christmas Carol" event.



Ladies socialize before the dress rehearsal of *Dracula* at the Big Event in February.



2023-24 Leading Ladies Co-Chairs Danute Miskinis and Amelia Crutcher, Osborn Family Producing Artistic Director Blake Robison, and 2024-25 Leading Ladies Co-Chairs Ronna Willis and Catharina Toltzis at the April *Vietgone* event.

LEGACY GIVING

SETTING A COURSE FOR A BOLD VISION OF THE FUTURE

With the completion of our stunning new mainstage theatre complex, we find ourselves at a pivotal moment — one filled with promise, potential and endless possibilities. From this new vantage point, we again look to the future and set a bold course to ensure the Playhouse continues to be a dynamic force in our arts community for generations to come.

Planned gifts play a critical role in sustaining our impact, providing essential resources that allow us to weather unexpected challenges and pursue opportunities for growth and innovation. Legacy gifts help us reach ambitious goals, such as achieving **national prominence**, growing our **regional impact**, **educating new generations**, and inspiring and cultivating the **new works** that will become the American theatrical canon of tomorrow.

Visionary supporters of both current and past generations have helped build the resources we need to secure our role as a vital cultural institution shaping the artistic landscape of Cincinnati for generations to come.

LEGACY GIVING IN ACTION: PATTI MYERS AND ALAN FLAHERTY, MORSE JOHNSON SOCIETY MEMBERS

The Playhouse is home to many visionaries, including Board member Patti Myers and Alan Flaherty. As subscribers for more than four decades, their dedication to the Playhouse runs deep and has roots in the American regional theatre movement itself.

Patti and Alan have long been fascinated by the regional theatre movement, which the Playhouse helped spark in 1959. They have created and taught courses at UC's OLLI Institute on regional theatre in America and the history of the Playhouse. This shared dedication has inspired them each to make an individual bequest in his/her will. These dual planned gifts will ensure that they can continue to support this great work even after they are gone. "That is what planned giving is all about," Patti said.

Patti has a creative way of looking at the Playhouse's mission. "The Playhouse's offering is like the box of chocolates Forrest Gump talks about. You never know what you're going to get. We want to ensure the Playhouse can continue to thrive, building on its impressive legacy of two Tony Awards®, numerous world premieres, Broadway-bound shows and national recognition."



Alan Flaherty and Patti Myers.

THE MORSE JOHNSON SOCIETY

Named after Morse Johnson, the first President and chairman of the Board of Trustees. The Morse Johnson Society honors those who have included the Playhouse in their estate plans. Morse Johnson Society members help ensure the Playhouse continues to be a dynamic force in our arts community for generations to come.

MORSE JOHNSON

SOCIETY Securing the future of the Playhouse

Anonymous
Romola N. Allen
Henrietta Barlag
Roderick and Barbara Barr
Peggy Barrett
Martha L. Bell
David and Elaine Billmire
Thomas J. Breed
Charlin Briggs
Rosemarie Brown
John and Peg Bruggeman
Susan and Burton Closson
Carol C. Cole
Richard and Teddie Curry
Kelly M. Dehan and Richard J. Staudigel
Jan Denton
Marilyn Derfus
Jackie Dieckman and Mike Camery
Mrs. James M. Edwards
Barbara Fitch
In memory of Phyllis A. Followell, my heart
Allison Gerrety
Victoria Buyniski Gluckman
Madeleine H. (Mady) Gordon
J. Frederick and Cynthia Gossman
Linda and Gary Greenberg
Carol Green
Jan and Herman Groshoff
Cheryl Harden Love
Mrs. Robert J. Hasl
Robert and Judith Heaton
Dave and Betsy Hendy
Andrea and Dr. Edward Herzig
Karlee L. Hilliard
Susan M. Ingmire
Andrew MacAoidh Jergens
Judith E. Johnson
M. J. Johnson
Jan and Jay Kalagayan
Winifred B. Kessler
David and Janice Klocke
Mike and Marilyn Kremzar
Randolph and Patricia Krumm
Ms. Abby E. Langdon
Donald W. Leedy
Terry Lemmerman
Jamie Leonard
Mary V. Lierl
Barbara Lyons
Jacqueline M. Mack

James A. Markley, Jr.
David L. Martin
David Mason
Ron Matson and Daniel Young
Barbara and Kim McCracken
Charles and Joann Mead
Becky Miars
Lauren and James Miller
David and Diane Moccia
William J. and Mary G. Moran
Patti Myers and Alan Flaherty
Ronald and Debi Nash
Julia Okenfuss
Charlotte and Robert Otto
Carolyn Parker
Charles and Tara Pease
Jenny and David Powell
Betty L. Prince
Pamela Reising
Ellen Rieveschl
Richard Rosenthal
Jack and Moe Rouse
Robert and Dell Ann Sathe
Mark and Rosemary Schlachter
Carol J. Schroeder
Digi France Schueler
John L. Shields
Jerry and Betsy Shroat
Ann M. Simsic
Mrs. Paul G. Sittenfeld
Adrienne Angst Smith
Francis and Susan Stanton
Nancy M. Steman
Sidney Thomas
Diane D. Todd
Marty C. Tomb
Ellen and Ray van der Horst
Margaret and Albert Vontz III
Daniel G. Walker
JoAnn and Paul Ward
Dr. and Mrs. Nelson B. Watts
Jim and Jo Ann Weber
Irwin and Barbara Weinberg
Barbara M. Weyand
Ronna and Dr. James B. Willis
Susan and Don Zaunbrecher

POSTHUMOUSLY REMEMBERED

Anonymous
Helen and Charles Abramovitz
Mrs. Thomas Adler



Morse Johnson

Robert H. Allen
Karen H. Bell
Mr. Neil Billman
Frank and Rosemary Bloom
Peter Briggs
Jack G. Brown
Leland M. Cole
Eva Jane Romaine Coombe
John V. Crable
John F. Curley
Guy and Cathy DeDiemar
Anne Elkins Didrichsen
Mrs. Elizabeth Easley
James M. Edwards
Felix and Weta Mae Elkins
Margaret M. Embshoff
Jerome A. Fey and Robert J. Schlafle
Stona Fitch
William A. and Susan S. Friedlander
Oliver M. Gale
Charles and Caroline Goering
Peter and Mary Hainline
Carolyn G. Hamilton
Dr. Robert J. Hasl
Mrs. Morse Johnson
Stanley M. Kaplan, M.D.
Minor and Dan LeBlond
Keith Lemmerman

Ron Lyons
Manuel D. and Rhoda Mayerson
Mr. and Mrs. Arnold Morelli
Richard Okenfuss
Jack and Marilyn Osborn
Maurice E. Oshry
George Rieveschl
Launcey Roder
Lois Rosenthal
Gene F. Santoro
Mr. and Mrs. Robert C. Schiff, Sr.
Karl and Roberta Schlachter
Mary Louise Schroth
Marsha Shields
Paul G. Sittenfeld
Louise W. Spiegel
Rick Steiner
Jane K. Steinfist
Thurza R. Sternberg
Charles and Sue Straus
Charles L. and Joan Thomas, Jr.
Lynda A. Thomas
Dr. Thomas Todd
Howard Tomb
Albert Vontz, Jr.
Mr. and Mrs. Dick Waite
Stuart and Gladys C. Warshauer
Monte Witte

BOARD OF TRUSTEES

2023-24 FISCAL YEAR

Digi France Schueler, President **James C. Leonard**, Vice President
Stephen Lett, Secretary **Dean A. Moulas**, Treasurer **Ellen G. van der Horst**, Chair

TRUSTEES

Ronald T. Bates	Peter A. Draugelis	Jacqueline M. Mack	KJ Sanchez
David M. Billmire M.D.	Judy Ellis	Kevin N. McMurray	Austin Schiff
Douglas Brauch	Elizabeth George	Danute Miskinis	Digi France Schueler
MC Brennan	Linda Greenberg	Roy A. Mitchell	Jerry Shroat
Julie A. Broadwell	Bernita McCann Hightower	Samuel Moore, Jr.	Woody Taft
Ron Bunt	Susan Ingmire	Dean A. Moulas	Ellen G. van der Horst
Robert S. Castellini	Diane S. Jordan	Patti Myers	Al Vontz, III
James P. Conway, Jr.	Thomas M. Keckeis	Sara Phillips	Julia Wesselkamper
Virginia Copley	Bet Koeninger	Audra Rance	Barbara M. Weyand
Deborah Davis	Terry Lemmerman	Robert Reifsnyder	Susan Whitman
Scott X. Deters	James C. Leonard	Deborah White Richardson	Ronna Willis
Timothy Douglas	Stephen Lett	Margo K. Ross	Susan B. Zaunbrecher

EMERITI

Otto M. Budig, Jr.	Morse Johnson ⁺	Albert Vontz, Jr. ⁺
Chuck Carothers ⁺	Lois Rosenthal ⁺	Albert Vontz III
David Herriman ⁺	Jack Rouse	
Andrew MacAoidh Jergens	Howard Tomb ⁺	

⁺ In Memorium

LAND ACKNOWLEDGEMENT

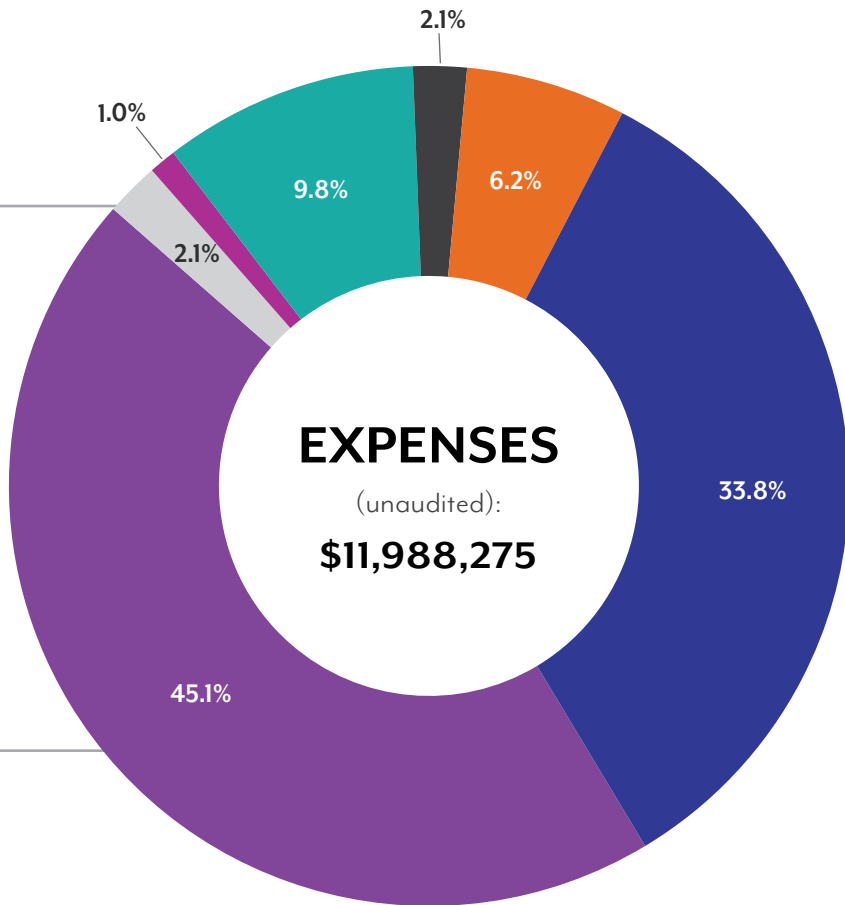
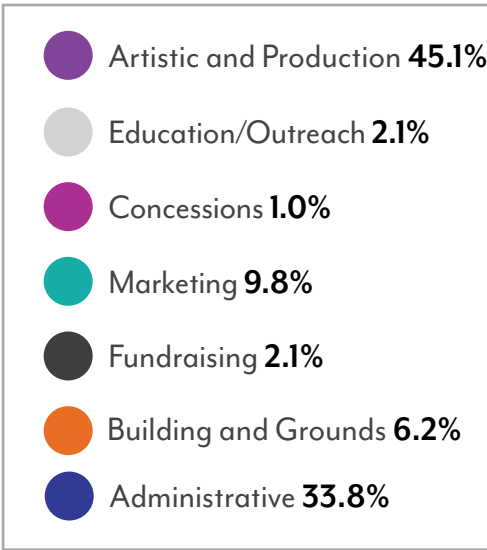
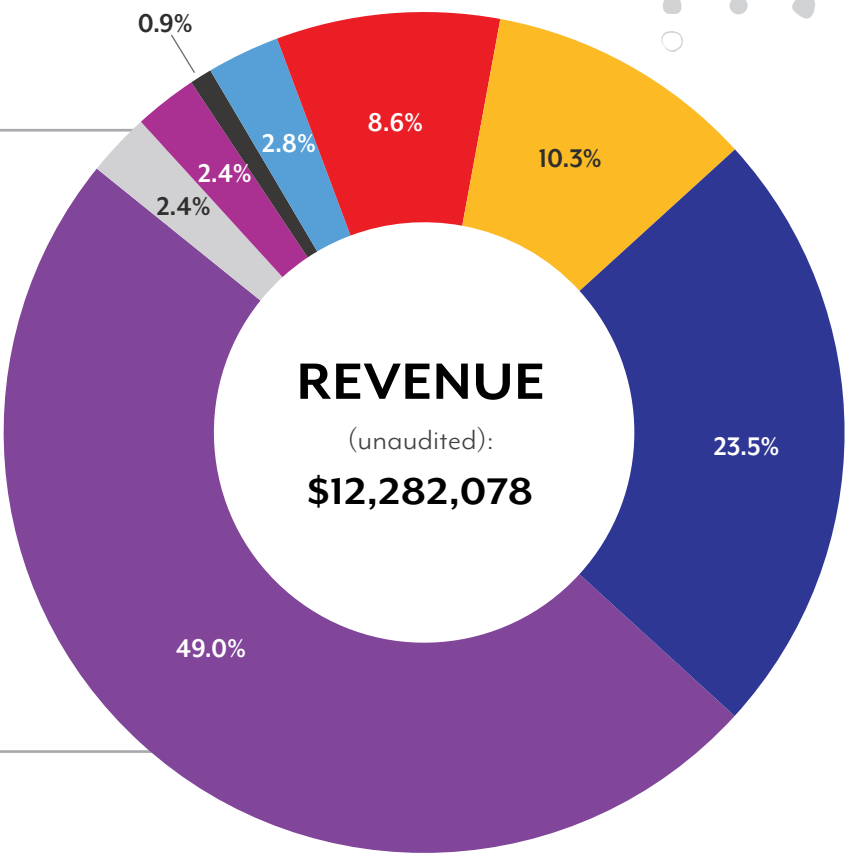
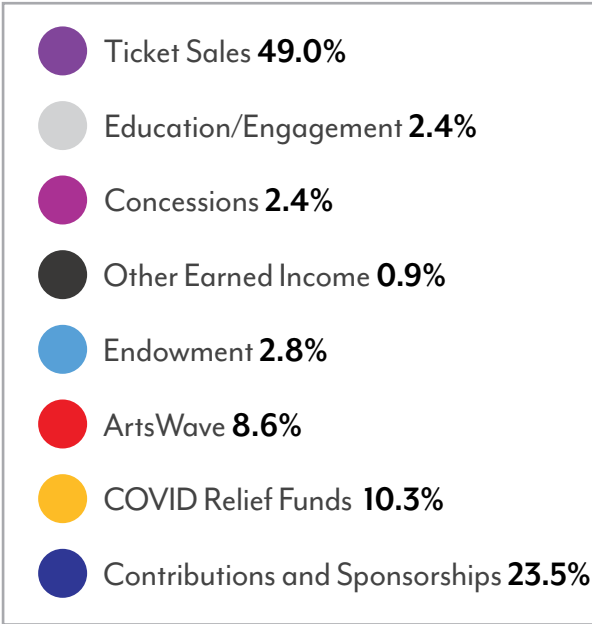
Ohio, whose name originates from the Iroquoian word *ohi-yo*, meaning *good rivers*, is a testament to the deep connection between the land and the Indigenous peoples who have inhabited it for centuries. The Cincinnati region is ancestral land of many Nations, and Indigenous people are still here today. As a step toward honoring the truth and achieving healing and reconciliation with Indigenous peoples, we recognize and honor the enduring connection these Nations have to this territory. May we reflect on our commitment to understanding, preserving and celebrating the rich culture of Native Indigenous communities who have shaped and continue to contribute to these lands.

WHAT IS A LAND ACKNOWLEDGMENT?

It is the recognition of the Native Americans/First Nations/Indigenous Peoples who cared for these lands prior to removal. Our statement was created with guidance from our partners at the **Urban Native Collective**. For more information, visit urbannativecollective.org.

FINANCIAL REPORT

2023-24 Season



DONOR LIST 2023-24 FISCAL YEAR

THANK YOU FOR YOUR SUPPORT

This list includes all gifts given to the Playhouse for the 2023-24 season (July 1, 2023 – June 30, 2024), not including Endowment and Capital Campaign gifts.

AUDIENCE (\$50,000+)

Anonymous
ArtsWave
First Financial Bank
Greater Cincinnati Foundation
Carol Ann and Ralph V. Haile, Jr. Foundation
Kerry Automotive
L&L Nippert Charitable Foundation
Ohio Arts Council
Ohio Department of Development
The Robert and Adele Schiff Family Foundation
The Harold C. Schott Foundation
The Schueler Group
Digi and Mike Schueler
The Shubert Foundation
Nancy and Tim Sparks

PLAYWRIGHT (\$30,000 - \$49,999)

Eleanora C.U. Alms Trust, Fifth Third Bank, N.A., Trustee
The Charles H. Dater Foundation
The Jewish Foundation of Cincinnati
The Daniel and Susan Pfau Foundation
Moe and Jack Rouse
The Harold and Mimi Steinberg Charitable Trust
U.S. Bank
Margaret and Albert Vontz III*

PRODUCER (\$20,000 - \$29,999)

Mrs. L.L. Browning, Jr.
Chemed Foundation
Nancy and Mark Dawes
Sarah and Tommy Evans
Linda and Gary Greenberg*
Mrs. Andrea and Dr. Edward Herzog
Johnson Investment Counsel
Terry Lemmerman
The Markley Family, in memory of James and Noretta Markley
Becky Miers
The Marilyn J. and Jack D. Osborn Fund
The Louise Taft Semple Foundation
Julie and Steven J. Shifman
Ellen and Ray van der Horst
Randolph Wadsworth
Barbara M. Weyand

DIRECTOR (\$10,000 - \$19,999)

MC and Tom Brennan
Clark Schaefer Hackett
Richard and Lisa Ernst
Frost Brown Todd
The Geiler Company
Marilyn Kinne
Jacqueline M. Mack and Dr. Edward B. Silberman
Charles and Joann Mead
Leon and Barb Meyer
Diane and Dave Moccia
Arthur C. Morrissey and Janet M. Hayes
Jenny and David Powell
Richard Goettle, Inc.
William S. Rowe Foundation
Eddie and Pat Sheppard
Skidmore Sales & Distributing Co., Inc.
Steve and Sarah Steinman
Nellie Leaman Taft Foundation
Jennifer and Woody Taft
Barbara and Irwin Weinberg Fund*

STAGE MANAGER (\$7,500 - \$9,999)

Diane and Carl Iseman
Bill and Mary Jane James

SET DESIGNER (\$5,000 - \$7,499)

Atkins & Pearce Inc.
Bahl & Gaynor Investment Counsel
Ron Bates and Randy Lasley
Mark and Lindsay Bibler
David and Elaine Billmire
Ruth and Tom Bobenread
Neil Bortz

Wayne and Fran Carlisle
Denise and Martin Chambers
James P. Conway, Jr. and Richard D. Robertson, Jr.
Richard and Teddie Curry
Elizabeth George
Mrs. Victoria Buyniski Gluckman and Dr. Jack Gluckman
Clifford Goosmann and Andrea Wilson
Jeb and Nirvani Head
Fred and Patti Heldman*
Susan Ingmire
Patti and Tom Keckeis*
David M. and Bet Koeninger
Mark and Karen Kremzar
Mr. and Mrs. Michael H. Kremzar
Jamie and Jenny Leonard
Mr. and Mrs. Stephen S. Lett
Craig and Anne Maier
Barbara and Kim McCracken
Kevin and Frances McMurray
James A. Miller
Ms. Danute M. Miskinis
David and Judith Morgan
Dean and Catherine Moulas
Patti Myers and Alan Flaherty
Jack and Marilyn Osborn*
Prudential - Matching Fund
Mrs. Deborah White Richardson
Amy and John Rosenberg
Margo and Sam Ross
Mark and Rosemary Schlachter
John and Jennifer Stein
Towne Properties
Edward Trach
Lawrence and Maureen Vignola
The Vista Foundation
The Maxwell C. Weaver Foundation
WesBanco
Ronna and Dr. James B. Willis
The Wohlgemuth Herschede Foundation
Susan and Don Zaunbrecher

COSTUME DESIGNER (\$2,500 - \$4,999)

Anonymous (2)
1919 Investment Counsel
David and Traci Alexander
William P. Anderson Foundation
Mr. and Mrs. Robert O. Banks
Jan Bartel
Ed and Debbie Birck
Jane and Gary Booth
Douglas Brauch
Thomas J. Breed
Susan Brenner and Steven Mombach
The Otto M. Budig Family Foundation
Jeff and Gay Bullock
Janet and Bruce Byrnes
Candace Carson
Jack and Virginia Copley
The Crawford Family Foundation
Amelia and Thomas Crutcher
Scott X. Deters
Peter Draugelis
Allison and Rick Edwards
Michael and Amy Fitzgibbons
The Goldhoff Family
Ellen and Garrett Jackson*
Johnson & Johnson - Matching Fund
Dr. Robert Keith and Kathleen Thornton-Keith
Marvin Kolodzki
David Martin
McKesson
Samuel Moore, Jr.
Tom and Linda Palmer
Stuart and Ildiko Pray
Betty L. Prince
Audra Rance
Rob and Gretchen Reifsnnyder
Kathy Shell and Joetta Prost

Betsy and Jerry Shroat
Rick Slack
Mr. and Mrs. Stephen Smith
Sandra and Henry Spitz
Steiner Family Foundation
Joseph B. Steiner
Robert D. Temple and Sue E. Auerbach
Thembi Speaks LLC
Mr. and Mrs. Scott Tieke
Barbara and Daman Turner
Water Tower Fine Wines
Julia Wesselkamper and Julian Johnson
Susan Whitman
Jo Ann Wieghaus
Margaret and John H. Wyant

LIGHTING DESIGNER (\$1,000 - \$2,499)

Anonymous (2)
25th Hour
Susie Ackermann
Ms. Kathryn Allred Al-Lamadani
Gordon Allen and Linda Baas
Americana Arts Foundation
Thomas and Susan Anthony
Eric and Brenda Armstrong Family Fund*
Peggy Barrett
Michael and Shelia Becker
Mary Ann and Doug Bell
Judith and Louis Belli
Kit Berger
John Berninger
Kenneth W. and Dawn H. Bertsche
Randal S. Bloch
Sandra Bolek
Mr. and Mrs. Ken Borisch
Charlotte Brooks
David and Marybeth Brothers
Dr. Jane Brown and Mr. Paul Beck
John and Peg Bruggeman
Jacklyn and Gary Bryson
Mr. and Mrs. Herbert Bullock
Ron Bunt and Wei Sun
Eric Burgmann and Linda Vaccariello
Bonnie and Dick Buten
David and Sara Butler
Terri and John Byczkowski
Ramon and Kathleen Cardona
Larry and Julie Chandler
James Cissell
Philip Clayton
Burton and Susan Closson
Mr. Rick Coffey
Dr. Robert Henry and Deborah Collins
Pearl J. Compaan, M.D.
Marjorie Compton
The Cord Foundation
Kassy and Jeff Corken
Robin Cotton and Cindi Fitton
Susan Cummings
Anne Dagenbach
DJJ, A Nucor Company
Kelly M. Dehan
Kathryn Dierckes
Michael and Kathleen Doherty
Mr. and Mrs. Robert T. Dorward
William G. Dorward III
Marilyn Duke
Saralou and Dave Durham
Ms. Joyce Elkus
Eric and Judy Ellis
George Fabe Fund of the Greater Cincinnati Foundation
Mary and Bob Fitzpatrick
Paul and Nancy Gaffney
Edward Gemperle
Richard and Kathleen Glaser
Donn Goebel and Cathy McLeod
Eleanor and Richard Goering
Peggy L. Golden and Kerry J. Klumpe

Tom Gougeon
Graeter's Ice Cream Co.
Carl and Joyce Greber
Chris and Janet Gunn
Teri and Mike Haught
Brenda Hausterman
Louise Head
Betsy and Dave Hendy
Jim and Susan Herman
Ms. Sherrie Heyse
Bernita McCann Hightower
Grace and Brian Hill
William W. and Sue R. Hill
Karlee L. Hilliard
Hixson Architecture, Engineering, Interiors
Noel and Karen Hofmann
Karen and David Hoguet
Linda R. Holthaus
Timothy and Julie Driehaus Horton
Barbara J. Howard
Carolyn and Michael Hoyt
Marty Humes
Pat Humphrey
Maite Iraolagoitia
Patti and Keith James
Sylvia Johnson
Laurie F. Johnston
Don and Frani Jones
James and Brenda Jones
Mr. and Mrs. Geoffrey Keenan
Arleene Keller
Robert A. and Marian K. Kennedy Charitable Trust
Judith Kenniston
Beverly Kinney and Edward Cloughessy
Margo Kirstein
Kohnen Interior Design, Meg Kohnen
Kathleen B. and Michael C. Krug*
Randolph and Patricia Krumm
Jo Ann and George Kurz
Mr. and Mrs. John LaMacchia
Dr. John Larkin
Susan J. Lauf
Dr. Carol P. Leslie
Donna Lilley
Kelly Lyle
Kay Lynch and Chuck Beckman
Mark K. Mandell-Brown MD
Ms. Margaret E. Mathile
Elizabeth Mayfield*
David and Diane McClain
Selena McKean
Mark McKillip and Amira Beer
Hope Earls McSwigan
Jan Melcher
Richard I. Michelman and Karen E. Meyer
Mr. Roy A. Mitchell
Jim and Eileen Moon
Joyce and William Mullins
Linda Muth
National Jewish Theatre Foundation
Karen Neyer
Michael Nordlund and Lisa Lee
Judy and Thomas Oxman
Melissa and John Panzeca
Marcia Philipps
Phillips Family Fund*
Mr. and Mrs. Don Popelar
Prolink
Leo and Sarah Pulte
Gerald D. Rape
Jeff and Lori Raser
Mitch and Karen Rashkin
Robert and Connie Reed
Alison and Rob Rice
Mr. and Mrs. Gates T. Richards
Ridgeway Foundation
Cathie Rothfuss
Jim Rubenstein and Bernadette Unger

DONOR LIST *continued*

Debra and Peter Ruehlman
Diane Rumpke
Ann Saluke and Don Yelton
KJ Sanchez
David Savage
Glenn and Kitty Schaaf
Austin Schiff
Pat and Paul Schlecht
Michael and Jeanne Schmerler
Charles and Alice Schneider
Mary D. Schweitzer
P. Robert Schwetschenau MD
Linda and Tom Senter
Mr. and Mrs. Irwin Simon
Elizabeth C. B. and Paul G. Sittenfeld
Gerald and Sarah Skidmore
Skyline Chili
Steven Smith
Susan and David Smith
Dr. and Mrs. Peter J. Stern
Elizabeth A. Stone*
Dr. Susan R. Strick
Tom and Keri Tami
Laura Turton
Susie Tweddell
Doug and Molly Tyger
JoAnn Ward
Larry Weber
Mary Ann and Ted Weiss
Jane Welling
Anthony and Sally Woodward

ACTOR (\$500 - \$999)

Anonymous (11)
Nancy Aichholz
Sherri D. Allen
Janice Amatulli
James Anthony and Sarah Corathers
Elizabeth C. Armitage
Charles W. Ashing, III
Bruce and Helene Ault
Susan Awadalla
Molly R. Barber
Mandy Bartel
Marianne Beard
Megan Beck
Gale and Dave Beckett
Becky Beckstedt
Wayne and Barbara Beimesch
Miss Martha L. Bell
Stephanie Besl
Bradley R. Bevington
Mr. Thomas E. Blackburn
Cheryl L. Borland
Mark Bowen
Selena, James, and Justin Bowling
Linda D. Brink
Barbara and Neal Bronson
Dr. Daniel T. Brown, DDS and
Mr. Mark Haggard
Jack and Marti Butz
Carol Campbell
Angela Carl
Nancy B. Carrothers
Chris and Jim Cartledge
Susana Chamlee
Melanie M. Chavez
Christine Christen
Fran Christensen
Mary Ellen Cody
Cynthia Cole
Loretta and David Cook
Mrs. Martha S. Crafts
Jean and John Croxton
Judy S. Dalambakis
Mark Dauner
Deborah Davis
Michelle de la Vega
Carol DeGreg
Debora Del Valle
Jan Denton
Jeffrey and Sharon DeRossette
Diamond/Wolf Family
Nancy Steman Dierckes
Thomas Donnelly
Dr. and Mrs. Walter E. Donnelly, Jr.
Timothy Douglas
Bethany L. Doverspike
Tim and Tina DuMont

Kay and Rich Eby
Delores J. Erby
Dr. and Mrs. Michael Farrell
Dr. and Mrs. William Faulkner
Michael Federle
Matthew Feldman and Julie Baker
Dr. Daniella Fisher
Dr. and Mrs. Bernard Foster
Missy and Brian J. Fox
Mary Anne Frey
Sharon Freyhof
General Electric
Mr. and Mrs. Howard Gerber
Frank and Karen Girolami
Veronica Glogowski
Daniel P. Goetz and Pattie Messmer
Nancy Gollobin
Barbara Gould
Marla and Gary Gross
Mary and Phil Hagner
Barbara Hahn
Margo Hall
Ham and Ellie Hamilton
Walter and Karen Hand
Carolyn Heck
Alice and John Hehman
Mrs. Anne P. Heldman*
Helene Herbert
Judy Tondi Herd
Bertie Hertz
Meg Hilmer
Mark and Deanna Hollon
Mr. and Mrs. George Horning
Kim Howland
Dr. Carol Hubbard
Joseph Huber and Shelli Smith
Amy Hughes
Dr. Linda Huntress
Nada Huron
Charlie and Janie James
Anne Jaroszewicz
Clare Jaymes
Larry and Jan Jeffers
Mark and Sarah Johnson
Dr. Amy Johnstone
Kyle and Sue Jones
Lisa Kagan
Dr. Toni and Rabbi Ken Kanter
Amy J. Katz
Arlene Katz
Peter and Sandy Keiser
Rosalynd Kendall
Mary Kay Koehler and Heather Apple
Heather Kromholz
Mark and Elisabeth Kuhlman
In memory of Ms. Lisa Jo Lambert
Mr. Edward Lanzit
Patricia Larsen
Lynn P. Larson
Mary Kay Levesay
Nancy Lippincott
Sally A. Lloyd
James Lockey and Grace Lemasters
Mr. and Mrs. Damon Lynch, Jr.
Dave and Lee MacKenzie
Ward and Ellen Maresca
Laurel Markley
Carolyn Ott Martin
Nancy C. Martin
Raymond and Madelynn Matlock
Ron Matson and Dan Young
Minda Matthews-Smith
Susan Matz
Kathy McCord
Stacy McIntosh
Kathy Merchant
Audrey E. K. Miller
Sarah Mizelle Miller
David and Martha Millett
Mitchell Briggs
Jill and Bruce Mitchell
Mary G. Moran
Brian and Katherine More
Stan and Mary Morton
Nora E. Moushey
Scott and Barb Muhlhauser
Munich Reinsurance America, Inc.
Jeannie Niebuhr

Nottingham Investment Advisers, Ltd.
Kit and Jack Overbeck
Niki Pappas
Mr. and Mrs. Daniel Pardekooper
Carl Parrott and Molly Katz Fund*
Jenny Partridge
Kathy and Bob Pellegrino
Debbie Pendl
Alice W. Perlman
Diane and Jeff Pfaff
MaryAnn Pietromonaco
Philip J. Poon
Jane Portman
Phil and Susan Price
Sherri Adams Remaklus
Margie Rennie
Carol Holland Rentschler
Ms. Carol Reubel
Danielle Revelson
Jeff and Joyce Rich
Dr. Jeri B. Ricketts
Carole T. Rigaud
Buffie Rixey
Pete and Debbie Rizzo
Mary Ellen Roberts
Gigi Robison
Rita Ross
Karina Rothzeit
Richard and Barbara Ruddy
Jane M. Rutherford
James Sanitato
Ann Santen*
Mark Sass and Jan Rosenbaum Sass
Martha and Lee Schimberg
Roger and Glenda Schorr*
Carol J. Schroeder
Linda Sears
Carol Serrone
Ms. Connie Sheets
Shelly S. Sherman
John L. Shields
Sue Showers
Ivan and Karen Silverman
Debbie Renick Sims
Laura Skidmore
Jack and Barbara Smith
Ellen Pease and V. Clark Sole, Jr.
Mary Stagaman and Ron Kull
Tom and Dee Stegman*
Martha Lowe Steier
Stephanie and Joseph Stitt
Gary and Nancy Strassel
Carol Striker
Glenda Suttman
Dee Talley
Carlos and Roberta Teran
Amy and Bill Thaman
Gretchen Thomas
Gordon and Mary-Anne Thompson
J. Dwight Thompson
Morley and Brenda Thompson
Catharina Toltzis Ph.D.
Sneja H. Tomassian
Alicia B. Townsend
Linda Trebbi
Dionn Tron
James and Susan Troutt
Lynn Tumen
Gloria Uziel and Patrick Shea, M.D.
Catherine Valentine
Nancy A. Virgulak
Geroge and Julia Wadih
Daniel G. Walker and Lisa Capurro
Carol Walkner
Liz and Dave Wallingford
Sarah Warrington
Dr. and Mrs. Nelson B. Watts
Dr. and Mrs. Barry W. Webb
Kate Wehby
Dr. Alan Weinstein
Judy Wells
Steven and Heather Wesloch
Brendan and Julie White
Robert and Judy Wilson
Susan and Dean Windgassen
Marsha and Robert Wuerdeman
Laani A. Wuest
John M. Yacher

Linda Elam Young
Mary Beth Young

STAGEHAND (\$250 - \$499)

Anonymous (13)
Robert and Deborah Abrahams
Henry and Nancy Acciani
Ms. Susan Adick
Drs. Gordon and Dorothy Air
Liz and Hank Alexander
Mr. and Mrs. R. Bruce Anderson
Vic and Dee Angel
Joseph Baker
Mr. and Mrs. Jack Baldwin
Mike and Maria Barrett
Kate and Bill Baumann
Donald Beck and Lawrence E. Eynon, M.D.
Joseph and Vickie Beer
Thelma Bergman
Julie and Mark Bissinger
Mr. and Mrs. Ben Blackmer
Katy Bodenburg
Phyllis Bossin and Robert Strauss
Julie Broadwell
Michael Brown
Nancy and Thomas Bunnell
Conni Carlson and John Reynolds
Deborah and Banca Chamberlain
Gary Chandler
Cincinnati Art Museum
Sue Cogan
Julie and John Cohen
The Contemporary Arts Center
Douglas and Sarah Coons
Dr. and Mrs. Alan Cordell
Mr. and Mrs. Roy Cotcamp
Mr. Frank Davis
Mr. and Mrs. Robert Dearth
Marilyn J. Derfus
Martha Dillow
Sandra Doman
Ms. Jennifer DuBois
Bob and Kitty Dunn
John and Liz Dye
Leslie R. Dye, M.D.
Howard Elliott
Sharon and Bill Emeigh
Karla Epperson
Barbara Ann Feldmann
Bill Ferring
James K. and Susan A. Fitton
Maureen Flanagan and Will Groneman
Joy and Bill Fotsch
Carolyn and Terry Fox
John and Susan Frank
Mr. and Mrs. James A. Fraser
Shirley Gallagher
Sharon and Dennis Geiger
Mr. Robert A. Goering
Jim and Elaine Goldschmidt
Madeleine Gordon
Mrs. Sharon Gorman
Pank and Wendy Goulet
Dr. and Mrs. Samuel Greengus
Phillip Griggs
Dr. and Mrs. Ralph Gruppo
Margaret E. Hagar
Mr. and Mrs. James S. Hagedorn
Jan C. Hall
Joyce and Jim Hamberg
Jeff Hanna and Peggy Eberhard
Jim and Sally Harper
Dale Hodges and David F. Logan
Patricia L. Holman
Brad Hunkler
JSK
Andrew Kaplan
Joyce Keeshin
Tom and Judith Kinman
Mr. and Mrs. Larry E. Kissel
Mr. Kevin Kleist
Mr. and Mrs. John Kmet
Lisa Knochelmann
Judith A. Koch
Sandy Kohn
Elizabeth Landen Krone
Bill and Evie Landrigan
Shawna K. Langworthy
Jim Lippert and Carrie Short-Lippert

DONOR LIST continued

Elia Lopez
Thomas W. Loring, Jr.
Thomas and Jean Macejko
Ms. Carol MacGregor
Mr. and Mrs. Barry Malinowski
Charles and Jennifer Margolis
Braden Martini
David Mason
Suzanne Masterson
Kent Mathias
Ms. Sharon Mathis
Mr. and Mrs. David J. McAdams, in honor of
Vickie and Bruce Ellis
Dennis and Carol McCoy
Jeff and Debbie McNaul
Jerome Merski
Steven and Jacqueline Miller Family Foundation
Timothy C. Miller
Joel Monteith and Barbara Mustoe-Monteith
Tammy Moore

Terry and Jannelle Moore
Mr. Jerry Morgan
Andrew J. Nuckols
Bruce and Neda Nutley
J. Brett Offenberger and Douglas Duckett
The Patel-Curran Family
Mr. and Mrs. Donald Peairs
Janet Phillips
David Platt Fund*
Les and Molly Polasky
Mr. and Mrs. James Pretz
Michael and Nelda Purdon
Jennifer Ramage
Kathleen and Tom Riga
Linda Roomann and William Slutz
Bruce and Tina Ross
Bill and Kathy Schnier
Chris Schulte
Mary Schwaderer
William and Sandra Selvey

David and Diane Sherrard
Mary Lee and Louie Sirkin
Richard and Patricia Smith
Adrienne Angst Smith
Roger Smith
Alan and Glynis Smulian
Jennifer Soaper
Martha and John Spiess
Jeff and Michele Starke
Steelcase Foundation - Matching Fund
Robert L. and Christine J. Steiner*
Gunther and Sara Storzjohann
Kendra L. Struthers
Dr. Alan and Shelley Tarshis
Mr. and Mrs. Arthur L. Thompson
George and Linda Toft
Robert and Marcia Togneri
Marty C. Tomb
Torey and Tom Torre
Ann Marie Tracey and Daniel Buckley

The Tracy Family
Dilip and Janet Tripathy
Ms. Marlena Tyre
UBS Financial Services Inc.
Judith Verhave
Mr. Steve Voellmecke
Sarella Walton
Mr. and Mrs. Terry Webb
Dr. Donald R. and Patricia R. Welti
Steve Wilken
Mauri J. Willis
Rev. Anne Warrington Wilson
Mrs. Joan R. Wilson
Daniel and Jessica Woo
Dr. Linda Wulff
David and Cynthia Zink
John and Jean Zoller

*Denotes a fund of the
Greater Cincinnati Foundation

CORPORATE PARTNERS

The Playhouse is grateful for our Corporate Partners and their dedication to supporting the Greater Cincinnati community.

\$1,000 - \$3,499

The David J. Joseph Company

Graeter's Ice Cream Co.

Hixson Architecture, Engineering, Interiors

ProLink Staffing

Skyline Chili

Towne Properties

IN-KIND CONTRIBUTORS

The Playhouse is able to share timeless stories because of our in-kind contributors. Thank you for making our work possible!

Tony Arrasmith/Arrasmith & Associates

The Blind Lemon and Eddie Sheppard

Emerge Managed Solutions, LLC

Gray Photo Imaging

Mt. Adams Bar and Grill

Optic Lizard Productions

WARM 98

WCPO-TV

WGRR-RM

WOSL-FM, 100.3 R&B

WVXU-FM

WXIX-TV, Fox 19

WUBE-FM

RED CARPET DONORS

We are grateful for our Red Carpet Experience donors who treat their guests to an intimate, behind-the-scenes experience that also supports the Playhouse. Thank you!

Tom and MC Brennan

Richard Goettle, Inc. (3)

WesBanco

ARTSWAVE Corporate Partners

Cincinnati Playhouse in the Park acknowledges the following partner companies, foundations and their employees who generously participate in the annual ArtsWave Campaign at the \$100,000+ level.

altafiber

Carol Ann and Ralph V. Haile, Jr. Foundation

Cincinnati Business Courier

Cincinnati Children's Hospital Medical Center

The Cincinnati Insurance Companies

Cincinnati Reds

Duke Energy

The E.W. Scripps Company and Scripps Howard Foundation

The Enquirer | Cincinnati.com

Fifth Third Bank and Fifth Third Foundation

GE Aerospace

Great American Insurance Group

Greater Cincinnati Foundation

The H.B., E.W. and F.R. Luther Charitable Foundation, Fifth Third Bank, N.A., Trustee

The Kroger Co.

Messer Construction Co.

P&G

PNC

U.S. Bank

Western & Southern Financial Group

INSTITUTIONAL GIVING

The Playhouse is truly grateful for the generous support of our partners to bring extraordinary art and education programs to our community together. Thank you — it means the world to us!

\$50,000+

ANONYMOUS



The Carol Ann and
Ralph V. Haile, Jr.
FOUNDATION



ROBERT AND
ADELE SCHIFF FAMILY
FOUNDATION

THE HAROLD C.
SCHOTT FOUNDATION



\$20,000 – \$49,999

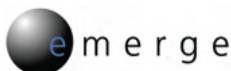
ELEANORA C.U. ALMS TRUST,
FIFTH THIRD BANK, N.A., TRUSTEE



LOUISE TAFT SEMPLE
FOUNDATION



\$10,000 – \$19,999



NELLIE LEAMAN TAFT
FOUNDATION

WILLIAM S. ROWE
FOUNDATION



THE HAROLD AND
MIMI STEINBERG
CHARITABLE TRUST

\$5,000 – \$9,999



MAXWELL C. WEAVER
FOUNDATION

THE WOHLGEMUTH
HERSCHEDE FOUNDATION

\$1,000 – \$4,999



AMERICANA ARTS
FOUNDATION

WILLIAM P. ANDERSON
FOUNDATION

THE CORD
FOUNDATION



ROBERT A. AND MARIAN K.
KENNEDY CHARITABLE TRUST

RIDGEWAY
FOUNDATION

EMERGENCY SUPPORT

The Playhouse would like to extend our deepest gratitude to the governments and institutions that provided critical support during the COVID-19 crisis:



Hamilton
County



U.S. FEDERAL
GOVERNMENT



The Carol Ann and
Ralph V. Haile, Jr.
FOUNDATION



Visit **CINCYPLAY.COM**



Box Office: 513-421-3888

Administrative Offices: 513-345-2242

Address: 962 Mt. Adams Circle, Cincinnati, Ohio 45202

Front cover (L-R by row): Allison Ann Kelly, David Rowen and Leenya Rideout in *Ring of Fire*; Jordan Anthony Arredondo and Amira Danan in *Sanctuary City*; Juan Arturo, Shannon Dorsey and Michael Chenevert Jr. in *Clyde's*; Beth Ward in *Late Nite Catechism*; Andrew May in *A Christmas Carol*; Sydnie Brown, Michele Shay and Maliyah Gramata-Jones in *Stew*; Mia Hutchinson-Shaw and Mi Kang in *Dracula*; Hyunmin Rhee and Viet Vo in *Vietgone*; Hillel Rosenshine and Eli Mayer in *The Chosen*.

Photos by Mikki Schaffner.